

Tasas

Table with columns: Instrumento, TNA, Plazo, Var. directa, Var. Anual. Includes Call 1d, Call 7d, Cautión 7d, CPD 1-30 días, CPD 331-360 días, BADLAR Priv. (>\$1mm), TMO20 Priv. (>\$20mm), LEBAC 35d, LEBAC 63d, TPMA - Latiq 7D, U.S. 10-YR, U.S. Tonaerada.

Dólar BCRA A3500

Table with columns: Plazo, Var. directa, Var. Anual. Includes 7d, 33d, 61d, 92d, 184d, 365d.

Reflex - Dólar Futuro

Table with columns: Posición, Vta, Plazo, TC, Tasa Imp., C. Ant., Var, Int. Ab*. Includes SPOT, DLR12018, DLR22018, DLR022019, DLR032019, DLR042019, DLR052019, DLR062019, DLR072019, DLR082019, DLR092019.

Bonds

Table with columns: Bond, Code, Amt Out., Coupon, Price, YTM, MD, Maturity. Includes Sovereign USD, Sub-Sovereign USD, Corporate USD, Electric - USD, Oil&Gas - USD.

Bonds

Table with columns: Bond, Code, Amt Out., Coupon, Price, YTM, MD, Maturity. Includes Sovereign Bond Inflation Indexed, Gatillo 5 02-19, Gatillo 5 03-20, Bocon 24, Boncer 21, Boncer 23, Disc ARL 05, Par ARL 05, C-Par ARL 05.

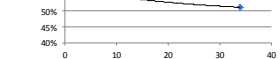
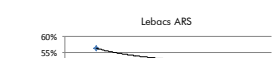
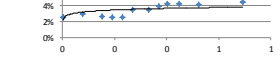
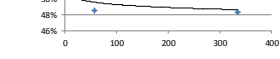
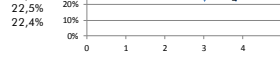
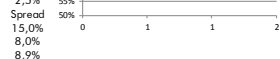
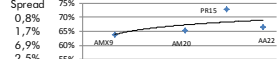
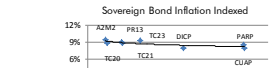
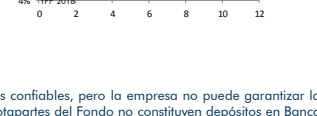
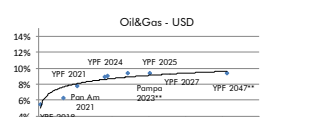
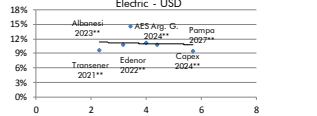
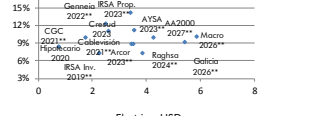
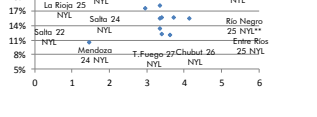
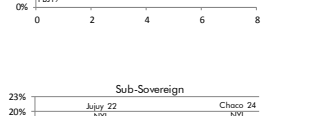
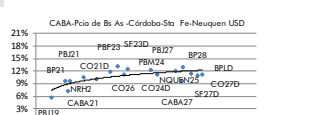
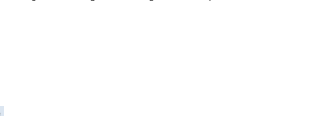
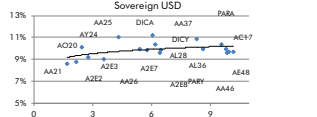
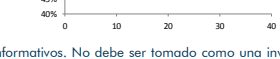
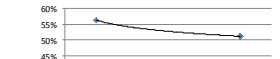
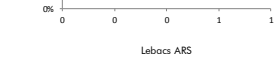
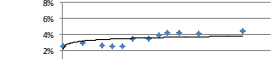
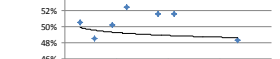
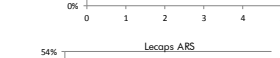
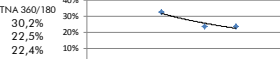


Table with columns: Bond, Code, Amt Out., Coupon, Price, YTM, MD, Maturity. Includes Sovereign and corporate ARS Floating Monetary Policy, HSBAC 20, Bocon 24, Boncer 21, Boncer 23, Disc ARL 05, Par ARL 05, C-Par ARL 05, Sovereign ARS Floating Badlar, Sub-Sovereign ARS Floating Badlar, CABA 20 C16, CABA 20 C18, CABA 20 C20, CABA 20 C22, CABA 20 C23, PBA 21 C1, PBA 21 C2, PBA 21 C3, PBA 21 C4, PBA 21 C5, PBA 21 C6, PBA 21 C7, PBA 21 C8, PBA 21 C9, PBA 21 C10, PBA 21 C11, PBA 21 C12, PBA 21 C13, PBA 21 C14, PBA 21 C15, PBA 21 C16, PBA 21 C17, PBA 21 C18, PBA 21 C19, PBA 21 C20, PBA 21 C21, PBA 21 C22, PBA 21 C23, PBA 21 C24, PBA 21 C25, PBA 21 C26, PBA 21 C27, PBA 21 C28, PBA 21 C29, PBA 21 C30, PBA 21 C31, PBA 21 C32, PBA 21 C33, PBA 21 C34, PBA 21 C35, PBA 21 C36, PBA 21 C37, PBA 21 C38, PBA 21 C39, PBA 21 C40, PBA 21 C41, PBA 21 C42, PBA 21 C43, PBA 21 C44, PBA 21 C45, PBA 21 C46, PBA 21 C47, PBA 21 C48, PBA 21 C49, PBA 21 C50, PBA 21 C51, PBA 21 C52, PBA 21 C53, PBA 21 C54, PBA 21 C55, PBA 21 C56, PBA 21 C57, PBA 21 C58, PBA 21 C59, PBA 21 C60, PBA 21 C61, PBA 21 C62, PBA 21 C63, PBA 21 C64, PBA 21 C65, PBA 21 C66, PBA 21 C67, PBA 21 C68, PBA 21 C69, PBA 21 C70, PBA 21 C71, PBA 21 C72, PBA 21 C73, PBA 21 C74, PBA 21 C75, PBA 21 C76, PBA 21 C77, PBA 21 C78, PBA 21 C79, PBA 21 C80, PBA 21 C81, PBA 21 C82, PBA 21 C83, PBA 21 C84, PBA 21 C85, PBA 21 C86, PBA 21 C87, PBA 21 C88, PBA 21 C89, PBA 21 C90, PBA 21 C91, PBA 21 C92, PBA 21 C93, PBA 21 C94, PBA 21 C95, PBA 21 C96, PBA 21 C97, PBA 21 C98, PBA 21 C99, PBA 21 C100.

Table with columns: Bond, Code, Amt Out., Coupon, Price, YTM, MD, Maturity. Includes Corporate ARS Linked Floating Badlar, Hipotecario 2020, Galicia 2020, Supervielle 2022, T. Naranja 2022, Corporate ARS Linked Fixed, Macro 2022, YPF 2022, Sovereign Dual ARS Fixed Dollar, Bonos Dual Jun-19, Bonos Dual Feb-20, Sovereign ARS Fixed, Bome 5 Oct 21, Bome 5 Oct 23, Bome 5 Oct 26.

Table with columns: Letras USD, Days, Amt Out., Coupon, Price, TNA, MD, Maturity. Includes LTDBN6, LTDBN8, LTDBN9, LTDBN10, LTDBN11, LTDBN12, LTDBN13, LTDBN14, LTDBN15, LTDBN16, LTDBN17, LTDBN18, LTDBN19, LTDBN20, LTDBN21, LTDBN22, LTDBN23, LTDBN24, LTDBN25, LTDBN26, LTDBN27, LTDBN28, LTDBN29, LTDBN30, LTDBN31, LTDBN32, LTDBN33, LTDBN34, LTDBN35, LTDBN36, LTDBN37, LTDBN38, LTDBN39, LTDBN40, LTDBN41, LTDBN42, LTDBN43, LTDBN44, LTDBN45, LTDBN46, LTDBN47, LTDBN48, LTDBN49, LTDBN50, LTDBN51, LTDBN52, LTDBN53, LTDBN54, LTDBN55, LTDBN56, LTDBN57, LTDBN58, LTDBN59, LTDBN60, LTDBN61, LTDBN62, LTDBN63, LTDBN64, LTDBN65, LTDBN66, LTDBN67, LTDBN68, LTDBN69, LTDBN70, LTDBN71, LTDBN72, LTDBN73, LTDBN74, LTDBN75, LTDBN76, LTDBN77, LTDBN78, LTDBN79, LTDBN80, LTDBN81, LTDBN82, LTDBN83, LTDBN84, LTDBN85, LTDBN86, LTDBN87, LTDBN88, LTDBN89, LTDBN90, LTDBN91, LTDBN92, LTDBN93, LTDBN94, LTDBN95, LTDBN96, LTDBN97, LTDBN98, LTDBN99, LTDBN100.



El presente documento ha sido realizado por Argenfunds S.A. con fines estrictamente informativos. No debe ser tomado como una invitación a suscribir cutopatantes ni como una oferta de compra o venta de valores. El documento se ha realizado con fuentes de información consideradas confiables, pero la empresa no puede garantizar la exactitud de las mismas. Los fondos comunes de inversión están sometidos a variaciones en los precios de los activos que pueden afectar su rendimiento. Los rendimientos pasados de los fondos comunes de inversión no garantizan el desempeño futuro de los mismos. Las inversiones en cutopatantes del Fondo no constituyen depósitos en Banco Macro S.A. a los fines de la Ley de Entidades Financieras ni cuentan con ninguna de las garantías que tales depósitos a la vista o a plazo pueden gozar de acuerdo con la legislación y reglamentación aplicables en materia de depósitos en entidades financieras. Asimismo, Banco Macro S.A. se encuentra impedida por normas del Banco Central de la República Argentina de asumir, tácita o expresamente, compromiso alguno en cuanto al mantenimiento, en cualquier momento, del valor del capital invertido, al rendimiento, al valor del rescate de la cuota partes o al otorgamiento de liquidez a tal fin. Gráficos de Elaboración propia. Fuentes Bloomberg y Borsar.