

Rates

Table with 2 columns: Instrumento, TNA. Rows include Call 1d, Call 7d, Caución 7d, Caución 30d.

Table with 2 columns: Instrumento, TNA. Rows include BADLAR Priv. (>\$1mm), TM20 Priv. (>\$20mm), TFM - Latiq 7D.

TNA ponderada

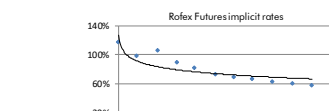
BCRA\$A3500 USD \$59,583

Table with 3 columns: Days, Change, Annualized. Rows show rates for 7d, 30d, 61d, 92d, 183d, 365d.

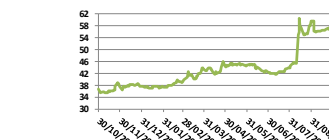
Rofex - ARS-USD Futures

Table with 10 columns: Futures, Maturity, Days, USD, Rates, -d1, Ch, Op. Rows include SPOT, DLR102019, DLR112019, etc.

Rofex Futures implicit rates



ARS Spot



Bonds

Table with 7 columns: Bond, Code, Amt Out., Coupon, Price, YTM, MD, Maturity. Rows include Sovereign Bond Inflation Indexed, Gallito \$ 03-20, Boncor 20, etc.

Table with 7 columns: Bond, Code, Amt Out., Coupon, Price, YTM, MD, Maturity. Rows include Sovereign ARS Floating Badlar, Bonar 20, Bocon 22, etc.

Table with 7 columns: Bond, Code, Amt Out., Coupon, Price, YTM, MD, Maturity. Rows include CABA TD C20, CABA TD C24, CABA TD C23, etc.

Table with 7 columns: Bond, Code, Amt Out., Coupon, Price, YTM, MD, Maturity. Rows include Lecaps ARS Strips, S28N9, S12D9, etc.

Table with 7 columns: Bond, Code, Amt Out., Coupon, Price, YTM, MD, Maturity. Rows include Lecaps ARS, S30S9, S11O9, etc.

Table with 7 columns: Bond, Code, Amt Out., Coupon, Price, YTM, MD, Maturity. Rows include Lecaps ARS, S31O9, S15N9, etc.

Table with 7 columns: Bond, Code, Amt Out., Coupon, Price, YTM, MD, Maturity. Rows include Lecaps ARS, S28F0, S30A0, etc.

Table with 7 columns: Bond, Code, Amt Out., Coupon, Price, YTM, MD, Maturity. Rows include Lecaps ARS, S29Y0, S31L0, etc.

Table with 7 columns: Bond, Code, Amt Out., Coupon, Price, YTM, MD, Maturity. Rows include Lecaps ARS, S31L0, S31L0, etc.

Table with 7 columns: Bond, Code, Amt Out., Coupon, Price, YTM, MD, Maturity. Rows include Lecaps ARS, S31L0, S31L0, etc.

Table with 7 columns: Bond, Code, Amt Out., Coupon, Price, YTM, MD, Maturity. Rows include Lecaps ARS, S31L0, S31L0, etc.

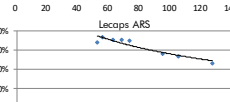
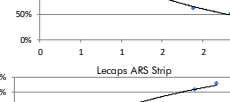
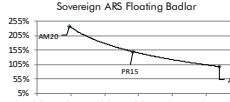
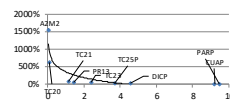
Table with 7 columns: Bond, Code, Amt Out., Coupon, Price, YTM, MD, Maturity. Rows include Lecaps ARS, S31L0, S31L0, etc.

Table with 7 columns: Bond, Code, Amt Out., Coupon, Price, YTM, MD, Maturity. Rows include Lecaps ARS, S31L0, S31L0, etc.

Table with 7 columns: Bond, Code, Amt Out., Coupon, Price, YTM, MD, Maturity. Rows include Lecaps ARS, S31L0, S31L0, etc.

Table with 7 columns: Bond, Code, Amt Out., Coupon, Price, YTM, MD, Maturity. Rows include Lecaps ARS, S31L0, S31L0, etc.

** Compounded monthly



** Callable Bond - Yield to Maturity

Bonds

Table with 8 columns: Bond, Code, Amt Out., Coupon, Price*, YTM, MD, Maturity. Rows include Sovereign USD, Bonar 20, AA21, etc.

Table with 8 columns: Bond, Code, Amt Out., Coupon, Price*, YTM, MD, Maturity. Rows include Bonar 24, AA24, AA25, etc.

Table with 8 columns: Bond, Code, Amt Out., Coupon, Price*, YTM, MD, Maturity. Rows include Bonar 25, AA25, AA26, etc.

Table with 8 columns: Bond, Code, Amt Out., Coupon, Price*, YTM, MD, Maturity. Rows include Bonar 26, AA26, AA27, etc.

Table with 8 columns: Bond, Code, Amt Out., Coupon, Price*, YTM, MD, Maturity. Rows include Bonar 27, AA27, AA28, etc.

Table with 8 columns: Bond, Code, Amt Out., Coupon, Price*, YTM, MD, Maturity. Rows include Bonar 28, AA28, AA29, etc.

Table with 8 columns: Bond, Code, Amt Out., Coupon, Price*, YTM, MD, Maturity. Rows include Bonar 29, AA29, AA30, etc.

Table with 8 columns: Bond, Code, Amt Out., Coupon, Price*, YTM, MD, Maturity. Rows include Bonar 30, AA30, AA31, etc.

Table with 8 columns: Bond, Code, Amt Out., Coupon, Price*, YTM, MD, Maturity. Rows include Bonar 31, AA31, AA32, etc.

Table with 8 columns: Bond, Code, Amt Out., Coupon, Price*, YTM, MD, Maturity. Rows include Bonar 32, AA32, AA33, etc.

Table with 8 columns: Bond, Code, Amt Out., Coupon, Price*, YTM, MD, Maturity. Rows include Bonar 33, AA33, AA34, etc.

Table with 8 columns: Bond, Code, Amt Out., Coupon, Price*, YTM, MD, Maturity. Rows include Bonar 34, AA34, AA35, etc.

Table with 8 columns: Bond, Code, Amt Out., Coupon, Price*, YTM, MD, Maturity. Rows include Bonar 35, AA35, AA36, etc.

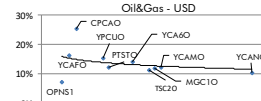
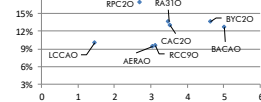
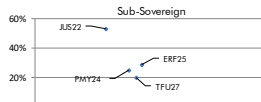
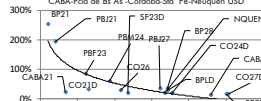
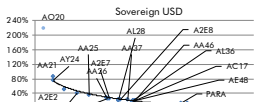
Table with 8 columns: Bond, Code, Amt Out., Coupon, Price*, YTM, MD, Maturity. Rows include Bonar 36, AA36, AA37, etc.

Table with 8 columns: Bond, Code, Amt Out., Coupon, Price*, YTM, MD, Maturity. Rows include Bonar 37, AA37, AA38, etc.

Table with 8 columns: Bond, Code, Amt Out., Coupon, Price*, YTM, MD, Maturity. Rows include Bonar 38, AA38, AA39, etc.

Table with 8 columns: Bond, Code, Amt Out., Coupon, Price*, YTM, MD, Maturity. Rows include Bonar 39, AA39, AA40, etc.

** Dirty Price



El presente documento ha sido realizado por Argenfunds S.A. con fines estrictamente informativos. No debe ser tomado como una invitación a suscribir cutupartes ni como una oferta de compra o venta de valores. El documento se ha realizado con fuentes de información consideradas confiables, pero la empresa no puede garantizar la exactitud de las mismas. Los fondos comunes de inversión están sometidos a variaciones en los precios de los activos que pueden afectar su rendimiento. Los rendimientos pasados de los fondos comunes de inversión no garantizan el desempeño futuro de los mismos. Las inversiones en cutupartes del Fondo no constituyen depósitos en Banco Macro S.A. a los fines de la Ley de Entidades Financieras ni cuentan con ninguna de las garantías que tales depósitos a la vista o a plazo pueden gozar de acuerdo con la legislación y reglamentación aplicables en materia de depósitos en entidades financieras. Asimismo, Banco Macro S.A. se encuentra impedida por normas del Banco Central de la República Argentina de asumir, tácita o expresamente, compromiso alguno en cuanto al mantenimiento, en cualquier momento, del valor del capital invertido, al rendimiento, al valor del rescate de la cuota partes o al otorgamiento de liquidez a tal fin. Gráficos de Elaboración propia. Fuentes Rofex CAFCY y Bolsar