

Rates

Table with columns: Instrumento, TNA, values for Call 1d, Call 7d, Caución 7d, Caución 30d.

Table with columns: Instrumento, TNA, values for BADLAR Priv. (>\$1mm), TM20 Priv. (>\$20mm), TFM - Latiq 7D.

TNA ponderada

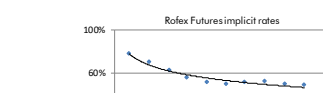
BCRAA3500 USD \$59,682

Table with columns: Days, Change, Annualized, values for 7d, 32d, 61d, 92d, 186d, 365d.

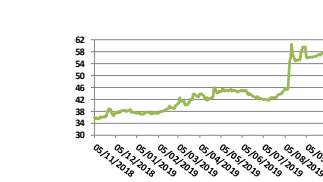
Rofex - ARS-USD Futures

Table with columns: Futures, Maturity, Days, USD, Rates, -d1, Ch, Op., values for SPOT, DLR112019, DLR122019, etc.

Rofex Futures implicit rates



ARS Spot



Bonds

Table with columns: Bond, Code, Amt Out., Coupon, Price, YTM, MD, Maturity, values for Sovereign Bond Inflation Indexed, Gallito 5 03-20, etc.

Sovereign ARS Floating Badlar

Table with columns: Bond, Code, Amt Out., Coupon, Price, YTM, MD, Maturity, values for Bonar 20, Bacon 22, etc.

Sub-Sovereign ARS Floating Badlar

Table with columns: Bond, Code, Amt Out., Coupon, Price, YTM, MD, Maturity, values for CABA TD C20, CABA TD C24, etc.

Table with columns: Bond, Code, Amt Out., Coupon, Price, YTM, MD, Maturity, values for PBA TD 2022, PBA TD 2025, etc.

Table with columns: Bond, Code, Amt Out., Coupon, Price, YTM, MD, Maturity, values for Neuquen 2021, Mendoza 2021, etc.

Sovereign Dual ARS Fixed Dollar - Linked

Table with columns: Bond, Code, Amt Out., Coupon, Price, YTM, MD, Maturity, values for Bonos Dual Feb-20, etc.

Table with columns: Bond, Code, Amt Out., Coupon, Price, YTM, MD, Maturity, values for Bonos \$ Oct 21, Bonos \$ Oct 23, etc.

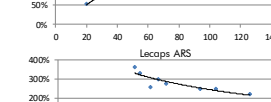
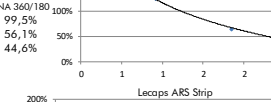
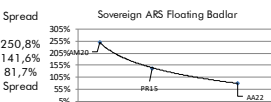
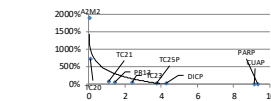
Lecaps ARS Strips

Table with columns: Days, Amt Out., Price, TNA, Maturity, values for S28N9, S12D9, etc.

Lecaps ARS

Table with columns: Days, Amt Out., Coupon, Price, TIR, MD, Maturity, values for S30S9, S11O9, etc.

** Compounded monthly



Bonds

Table with columns: Bond, Code, Amt Out., Coupon, Price*, YTM, MD, Maturity

Table with columns: Bond, Code, Amt Out., Coupon, Price*, YTM, MD, Maturity, values for Bonar 20, AA21, etc.

Sub-Sovereign USD

Table with columns: Bond, Code, Amt Out., Coupon, Price*, YTM, MD, Maturity, values for Bp. As. 21 NYL, CABA 21 NYL, etc.

Table with columns: Bond, Code, Amt Out., Coupon, Price*, YTM, MD, Maturity, values for Bs. As. PBI 21 NYL, Córdoba 21 NYL, etc.

Table with columns: Bond, Code, Amt Out., Coupon, Price*, YTM, MD, Maturity, values for Bs. As. 23 NYL, Córdoba 26, etc.

Table with columns: Bond, Code, Amt Out., Coupon, Price*, YTM, MD, Maturity, values for Salta 24 NYL, Chaco 24 NYL, etc.

Table with columns: Bond, Code, Amt Out., Coupon, Price*, YTM, MD, Maturity, values for Rio Rioja 25 NYL, T. Fuego 27 NYL, etc.

Table with columns: Bond, Code, Amt Out., Coupon, Price*, YTM, MD, Maturity, values for Mendoza 24 NYL, Mun. Cord 24 NYL, etc.

Table with columns: Bond, Code, Amt Out., Coupon, Price*, YTM, MD, Maturity, values for Entre Rios 25 NYL, Rio Negro 25 NYL, etc.

Table with columns: Bond, Code, Amt Out., Coupon, Price*, YTM, MD, Maturity, values for Neuquen 25 NYL, Córdoba 24 NYL, etc.

Table with columns: Bond, Code, Amt Out., Coupon, Price*, YTM, MD, Maturity, values for Bs. As. 27 NYL, CABA 27 NYL, etc.

Table with columns: Bond, Code, Amt Out., Coupon, Price*, YTM, MD, Maturity, values for Bs. As. 28 NYL, Sta Fe 27 NYL, etc.

Table with columns: Bond, Code, Amt Out., Coupon, Price*, YTM, MD, Maturity, values for Córdoba 27 NYL, For Bs.As. NYL, etc.

Corporate USD*

Table with columns: Bond, Code, Amt Out., Coupon, Price, YTM, MD, Maturity, values for Pan Am 2021, Hipotecario 2020, etc.

Table with columns: Bond, Code, Amt Out., Coupon, Price, YTM, MD, Maturity, values for YPF 2021, LCCA, etc.

Table with columns: Bond, Code, Amt Out., Coupon, Price, YTM, MD, Maturity, values for Transener 2021, CGC 2021, etc.

Table with columns: Bond, Code, Amt Out., Coupon, Price, YTM, MD, Maturity, values for Cernieco 2022, Edenor 2025, etc.

Table with columns: Bond, Code, Amt Out., Coupon, Price, YTM, MD, Maturity, values for Cliso 2023, AYSA 2023, etc.

Table with columns: Bond, Code, Amt Out., Coupon, Price, YTM, MD, Maturity, values for Petrol 2022, Albani 2021, etc.

Table with columns: Bond, Code, Amt Out., Coupon, Price, YTM, MD, Maturity, values for AA2000 2027, IRSA Prop. 2023, etc.

Table with columns: Bond, Code, Amt Out., Coupon, Price, YTM, MD, Maturity, values for Cresud 2023, YPF 2024, etc.

Table with columns: Bond, Code, Amt Out., Coupon, Price, YTM, MD, Maturity, values for Pampa 2023, Arcor 2023, etc.

Table with columns: Bond, Code, Amt Out., Coupon, Price, YTM, MD, Maturity, values for AES Arg. G. 2024, Raghisa 2024, etc.

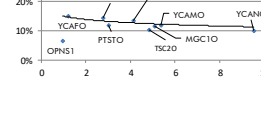
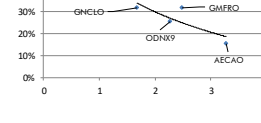
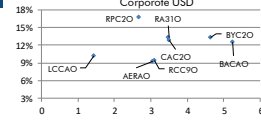
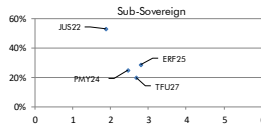
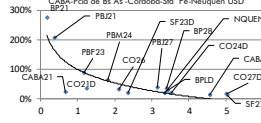
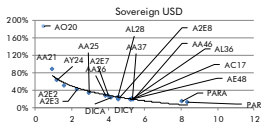
Table with columns: Bond, Code, Amt Out., Coupon, Price, YTM, MD, Maturity, values for Capar 2024, YPF 2025, etc.

Table with columns: Bond, Code, Amt Out., Coupon, Price, YTM, MD, Maturity, values for TGS 2025, Telecom 2026, etc.

Table with columns: Bond, Code, Amt Out., Coupon, Price, YTM, MD, Maturity, values for Pampa 2027, Macro 2026, etc.

Table with columns: Bond, Code, Amt Out., Coupon, Price, YTM, MD, Maturity, values for YPF 2027, YPF 2047, etc.

** Dirty Price ** Callable Bond - Yield to Maturity



El presente documento ha sido realizado por Argenfunds S.A. con fines estrictamente informativos. No debe ser tomado como una invitación a suscribir cutopartes ni como una oferta de compra o venta de valores. El documento se ha realizado con fuentes de información consideradas confiables, pero la empresa no puede garantizar la exactitud de las mismas. Los fondos comunes de inversión están sometidos a variaciones en los precios de los activos que pueden afectar su rendimiento. Los rendimientos pasados de los fondos comunes de inversión no garantizan el desempeño futuro de los mismos. Las inversiones en cutopartes del Fondo no constituyen depósitos en Banco Macro S.A. a los fines de la Ley de Entidades Financieras ni cuentan con ninguna de las garantías que tales depósitos a la vista o a plazo pueden gozar de acuerdo con la legislación y reglamentación aplicables en materia de depósitos en entidades financieras. Asimismo, Banco Macro S.A. se encuentra impedida por normas del Banco Central de la República Argentina de asumir, tácita o expresamente, compromiso alguno en cuanto al mantenimiento, en cualquier momento, del valor del capital invertido, al rendimiento, al valor del rescate de la cuota partes o al otorgamiento de liquidez a tal fin. Gráficos de Elaboración propia. Fuentes Rofex CAFCI y Bolsar